



# Concealed ceiling unit

## High static pressure – VRV indoor unit

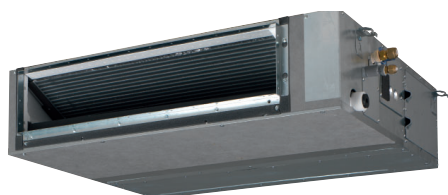
### FXSQ-A

Optimum comfort guaranteed no matter the length of ductwork or type of grilles

The FXSQ-A concealed ceiling unit features a 3-step airflow control, which offers improved comfort. Energy consumption is reduced by 20%, compared with the FXSQ-P series, thanks to the use of a new DC fan. The unit is ideal for shops and offices, because it can be used with ducts of varying lengths.

#### Features and benefits:

- > Automatic air flow adjustment function measures the air volume and static pressure and adjusts it towards the nominal air flow, whatever the length of duct, making installation easier and guaranteeing comfort. Moreover, the ESP can be changed via the wired remote control to optimize the supply air volume
- > Slimmest unit in class, only 245mm
- > Low operating sound level
- > Medium external static pressure up to 150Pa facilitates using flexible ducts of varying lengths
- > Discretely concealed in the ceiling: only the suction and discharge grilles are visible
- > 15 class unit especially developed for small or well-insulated rooms, such as hotel bedrooms, small offices, etc.
- > Reduced energy consumption thanks to specially developed DC fan motor
- > Flexible installation, as the air suction direction can be altered from rear to bottom suction
- > Standard built-in drain pump increases flexibility and installation speed



FXSQ-A



BRC1E52A/B



BRC4C65

# FXSQ-A

Indoor Units			FXSQ15A	FXSQ20A	FXSQ25A	FXSQ32A	FXSQ40A	FXSQ50A	FXSQ63A	FXSQ80A	FXSQ100A	FXSQ125A	FXSQ140A
Capacity	UK Total Cooling	kW	1.4	1.8	2.3	2.9	3.6	4.5	5.7	7.2	9	11.3	12.9
	UK Sensible Cooling	kW	1.1	1.4	1.8	2.3	2.9	3.6	4.5	5.7	7.2	8.9	10.2
	Nominal Cooling	kW	1.7	2.2	2.8	3.6	4.5	5.6	7.1	9	11.2	14	16
	Nominal Heating	kW	1.9	2.5	3.2	4	5	6.3	8	10	12.5	16	18
Air Flow Rate	High	m³/sec	0.145	0.15	0.15	0.15	0.25	0.25	0.35	0.38	0.53	0.6	0.65
	Low	m³/sec	0.1	0.1	0.1	0.11	0.18	0.18	0.25	0.26	0.38	0.43	0.46
External Static Pressure	High	Pa	150	150	150	150	150	150	150	150	150	150	150
	Low	Pa	30	30	30	30	30	30	30	40	40	50	50
Dimensions	Height x Width x Depth	mm	245 x 550 x 800				245 x 700 x 800		245 x 1000 x 800		245 x 1400 x 800		245 x 1550 x 800
Weight		kg	23.5	23.5	23.5	24	28.5	29	35.5	36.5	46	47	51
Electrical Details	Power Supply	Phase	1ph										
		Hz	50										
		V	230										
	Running Current	W	41	41	41	45	92	95	95	121	157	214	tbc
Sound Level	Sound Pressure	High	29.5	30	30	31	35	35	33	35	36	39	44
		Low	25	25	25	26	29	29	27	29	31	33	tbc
	Sound Power	High	54	54	54	55	60	60	59	61	61	64	tbc
		Low	54	54	54	55	60	60	59	61	61	64	tbc
Piping Connections	Liquid	inch (mm)	1/4 (6.4)	1/4 (6.4)	1/4 (6.4)	1/4 (6.4)	1/4 (6.4)	1/4 (6.4)	3/8 (9.5)	3/8 (9.5)	3/8 (9.5)	3/8 (9.5)	3/8 (9.5)
	Gas	inch (mm)	1/2 (12.7)	1/2 (12.7)	1/2 (12.7)	1/2 (12.7)	1/2 (12.7)	1/2 (12.7)	5/8 (15.9)	5/8 (15.9)	5/8 (15.9)	5/8 (15.9)	5/8 (15.9)

## Options & accessories

Adapters and controls	FXSQ 15~140A
BRC1E52A/B Premium wired remote control with full text interface and back light	•
BRC1D52 Standard wired remote control with weekly timer	•*4
Infrared remote control including receiver	BRC4C65
BRC2E52A Simplified wired remote control for heat recovery	•
BRC3E52A Simplified wired remote control for heat pump	•
DCS302C51 Central remote control	•
DCS301B51 Unified ON/OFF control	•
DST301B51 Schedule timer	•
DCM601A51 Intelligent Touch Manager	•
External wired temperature sensor	KRCS01-4B
External wireless temperature sensor	K.RSS
Adaptor for wiring (interlock for fresh air intake fan)	-
Wiring adapter for external monitoring/control via dry contacts and setpoint control via 0-140 Ω	KRP4A54
Wiring adapter for external central monitoring / control (controls 1 entire system)	KRP2A53
Wiring adapter with 4 output signals (compressor / Error, Fan, Aux. heater, Humidifier output)	KRP1B56
Wiring adapter with 2 output signals (compressor / Error, Fan)	-
Adapter for multi-tenant (24VAC PCB power interface)	DTA114A61
External control adapter for outdoor unit	DTA10A53
Installation box / Mounting plate for adapter PCBs (For units where there is no space in the switchboard)	KRP1B101
Connector for forced-off contact	-
Connection to centralised control	-
Electrical box with earth terminal (2 blocks)	KJB212A
Electrical box with earth terminal (3 blocks)	KJB311A
Electrical box with earth terminal	-
Digital input adapter	-

Other options	FXSQ 15~32A	FXSQ 40~50A	FXSQ 63~80A	FXSQ 100~140A
Kit for mounting of decoration panel direct onto unit	TBC	TBC	TBC	TBC
Panel spacer for reducing required installation height	-	-	-	-
Sealing kit for 3-directional or 2 directional air discharge	-	-	-	-
Fresh air intake kit	-	-	-	-
Air discharge adapter for round duct	TBC	TBC	TBC	TBC
Filter chamber for bottom suction	-	-	-	-
Replacement long life filter	-	-	-	-
Drain pump kit	standard	standard	standard	standard
Sensor kit	-	-	-	-
Noise filter (for electromagnetic use only)	-	-	-	-

\*4 Not recommended because of the limitation of the functions

The present leaflet is drawn up by way of information only and does not constitute an offer binding upon Daikin UK. Daikin UK has compiled the content of this leaflet to the best of its knowledge. No express or implied warranty is given for the completeness, accuracy, reliability or fitness for particular purpose of its content and the products and services presented therein. Specifications are subject to change without prior notice. Daikin UK explicitly rejects any liability for any direct or indirect damage, in the broadest sense, arising from or related to the use and/or interpretation of this leaflet. All content is copyrighted by Daikin UK.



Daikin Europe N.V. participates in the Eurovent Certification programme for Air conditioners (AC), Liquid Chilling Packages (LCP), Air handling units (AHU) and Fan coil units (FCU). Check ongoing validity of certificate online: [www.eurovent-certification.com](http://www.eurovent-certification.com) or using: [www.certiflash.com](http://www.certiflash.com)

